

Pay at Foot



AUTOMATION & ELECTRICAL MAINTENANCE LTD.

Automation of Gates, Doors, Barriers, Intercom Systems, Access Controls

Revenue parking system

All-purpose car park management system AS Park is based on State-of-the-Art technology of communication and data transmission on Ethernet basis. It is extremely convenient for all car parks and of any configuration and size. System use paper magstripe or barcoded tickets, while proximity cards can be integrated for season users.

All components of system use the same microprocessor unit F-power which enables stand-alone or full on-line operation including central data station. Each device has its own IP (Internet protocol) address for an independent communication and data transfer from any PC under full protection against third person access. The same control unit is installed also in central data station which can be used for data collection, monitoring and control of system.



All events and data are accessible not only from data station but also from any terminal which is important mainly for small or medium systems. Reports can be printed on any standard printer connected to PC with internet access. Systems offers all means of payment – cashier pay station, automatic station including rest in notes up to credit cards payment.

Various types of configuration:

- Pay-at-Exit
- Pay-on-Foot
- Automatic Pay Station
- Manual Pay Station
- Promotional activities that result in reduced value transactions
- Full integration of proximity cards for season users
- On-line or Stand-alone running



Payment station

Payment station FAM200/FAB100 works fully autonomously or as a part of system network.

Short-term parking tickets are checked after inserting to slot. Payment by coins and bills. The receipt on request.

Standard:

- alphanumerical 2 line display
- antivandal buttons
- LTMG read/write unit
- thermal receipt printer
- change giver
- bill validator
- cash-box
- double heating and cooling powered by processor
- special microprocessor F-Power unit with Ethernet or RS485 interface
- full data backup in case of power failure
- working temperature - -30 °C - 60 °C
- power supply 230V AC/50 Hz
- weight approx. 155 kg
- dimensions 700 x 600 x 1900 mm

Features:

- local or web-based management
- full activity reports directly from terminal
- remote control from central data station
- black list check-in
- all the transactions are stored
- full data backup in case of power failure
- self-replenishing cash change system
- shift management and reports
- statistics

Optional:

- replacement tickets issue
- prepayment for season tickets
- intercom



Entry terminal

Entry station FEM works fully autonomously or as a part of system network. Short-term parking tickets are issued by pushing the button if activated by loop detector. The entry terminal can also include the proximity reader for staff and season users. Entry station can handle up to 500 vehicles per hour.

Standard:

- alphanumerical 2 line LCD 2x20 char.
- antivandal button for ticket dispensing
- write/read dispensing unit with dot matrix printer feeding and cutting for mag. stripe tickets or rll for 1300 tickets
- ticket box for 5000 tickets or rll for 1300 tickets
- double heating and cooling powered by processor
- special microprocessor F-Power unit with Ethernet or RS485 interface
- full data backup in case of power failure
- working temperature - -30 °C - 60 °C
- power supply 230V AC/50 Hz
- weight approx. 60 kg
- dimensions 450 x 550 x 1250 mm
- cabinet with double treatment with both sides access doors, standard colour RAL2004
- large front panel with LCD, ticket dispenser and push button
- space for proximity reader



Features:

- local or web-based management
- full activity reports accessible directly from terminal
- remote control from central data station
- black list creation
- standalone or on-line function



Optional:

- intercom
- colour following RAL scale or stainless
- proximity reader



Exit terminal

Entry station FSM works fully autonomously or as a part of system network.

Short-term parking tickets are checked after inserting to slot. The exit terminal can also include the proximity reader for staff and season users. The entry station can handle up to 600 vehicles per hour.

Standard:

- alphanumerical 2 line LCD 2x20 char.
- antivandal ticket button
- LTMG read/write unit or BD400 barcode reader
- box for 3000 captured tickets
- double heating and cooling powered by processor
- special microprocessor F-Power unit with Ethernet or RS485 interface
- full data backup in case of power failure
- working temperature - -30 °C - 60 °C
- power supply 230V AC/50 Hz
- weight approx. 58 kg
- dimensions 450 x 550 x 1250 mm
- cabinet with double treatment with both sides access doors, standard colour RAL2004
- large front panel with LCD, ticket dispenser and push button
- space for proximity reader

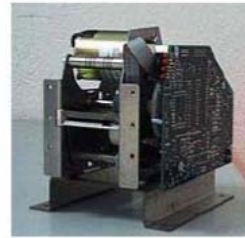


Features:

- local or web-based management
- full activity reports directly from terminal
- remote control from central data station
- black list checkout
- function

Optional:

- intercom
- colour following RAL scale or stainless
- proximity reader



Cashier terminal

Cashier terminal FMM200/FMB100 is used for pay-on-foot or pay-at-exit where it can control barking barrier.

Standard:

- any tariff structure
- cashier large alphanumerical 4 line display
- customer alphanumerical 2 line display
- LTMG read/write unit in desktop version
- processing of paper ticket and ISO standard plastic card
- receipt printer
- cash drawer
- comfortable cashier keyboard
- special microprocessor F-Power unit with Ethernet or RS485 interface
- all the transactions are stored
- power failure protection
- black list check-in



Main functions:

- payment
- sale of season cards
- shift management and reports
- statistics
- lost tickets
- promotion keys - part/delayed payments
- none payment/free exit reports
- promotional activity reports
- ticket validation



Optional:

- proximity reader



- 1 - microprocesor control unit
- 2 - keyboard with backlight
- 3 - cashdrawer
- 4 - customer display
- 5 - motorised card reader

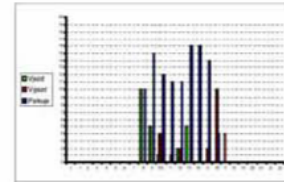
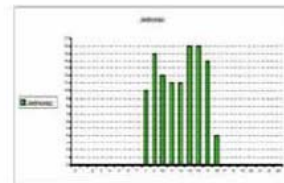
System components:

- Entry terminal – ticket issuing machine
- Exit terminal – ticket reader
- Automatic Pay Station
- Manual Pay Station
- Central Data Station
- Discount Validator
- Loop detectors
- Traffic signs Full/Free, Full, number of space available or Traffic lights Red/Green
- Rising barriers of required performance



Main characteristics:

- Various ticket type :
 - Magstripe tickets
 - Barcode tickets
 - Plastic recyclables cards
- Full records of all events in each device
- Direct access to/from each terminal
- Full details of season users
- Stand-alone or on-line operation
- Creation of black list
- Direct control of traffic signs Full/Free or Number of free space
- Control of up to 99 terminals in on-line version or unlimited in stand-alone system
- Unlimited tariff settings
- Stable and independent operating system
- LCD 4x20 or graphic (240x128 dots) display in automatic cash



Reports and transaction data :

- Shift report
- Daily report
- Interval report
- Promotional activity reports
- Season ticket usage report
- Daily occupancy report



Large front panel on each terminal to be used for installation of additional devices (Intercom, proximity card readers etc.)
Easy extension of the system.

